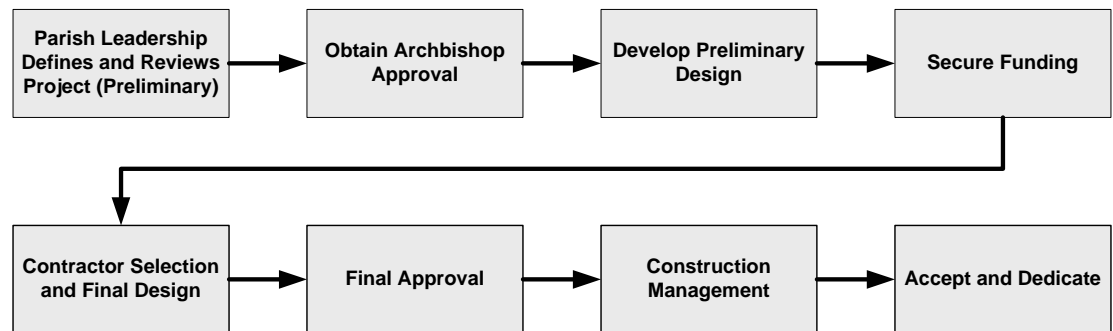

LARGE CAPITAL PROCESS – HIGH LEVEL OVERVIEW

At the highest level of detail, the recommended process for large capital projects is divided into the following eight steps:

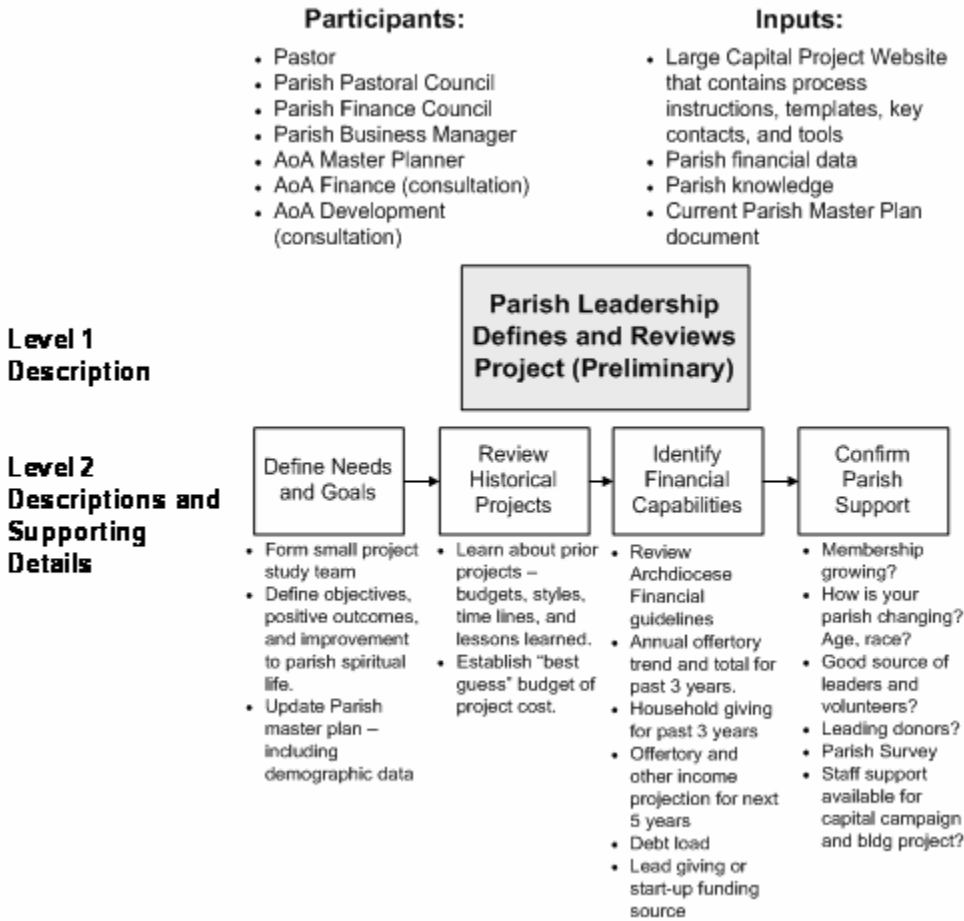


The following pages contain detailed information for each of the above eight steps. The additional detail includes:

- **Participants** – the roles / people that should be involved in the process step
- **Inputs** – the information needed to begin the process step
- **Level 2 Process Descriptions and Supporting Details** – additional process steps with supporting information that describes what needs to happen

1.1 LARGE CAPITAL PROCESS – DEFINE PROJECT

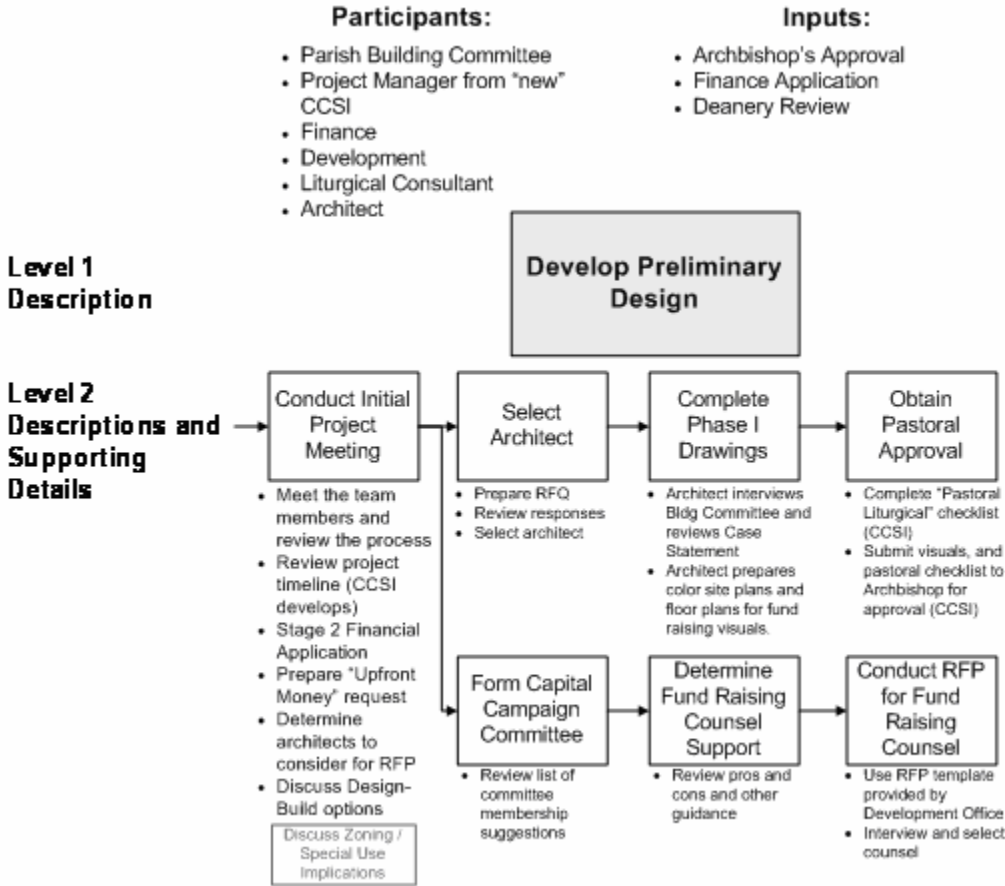
The following describes what needs to take place when a parish is first considering the need to start a large capital project.



*Please note, AoA Development is now called AoA Stewardship.

1.3 LARGE CAPITAL PROCESS – DEVELOP PRELIMINARY DESIGN

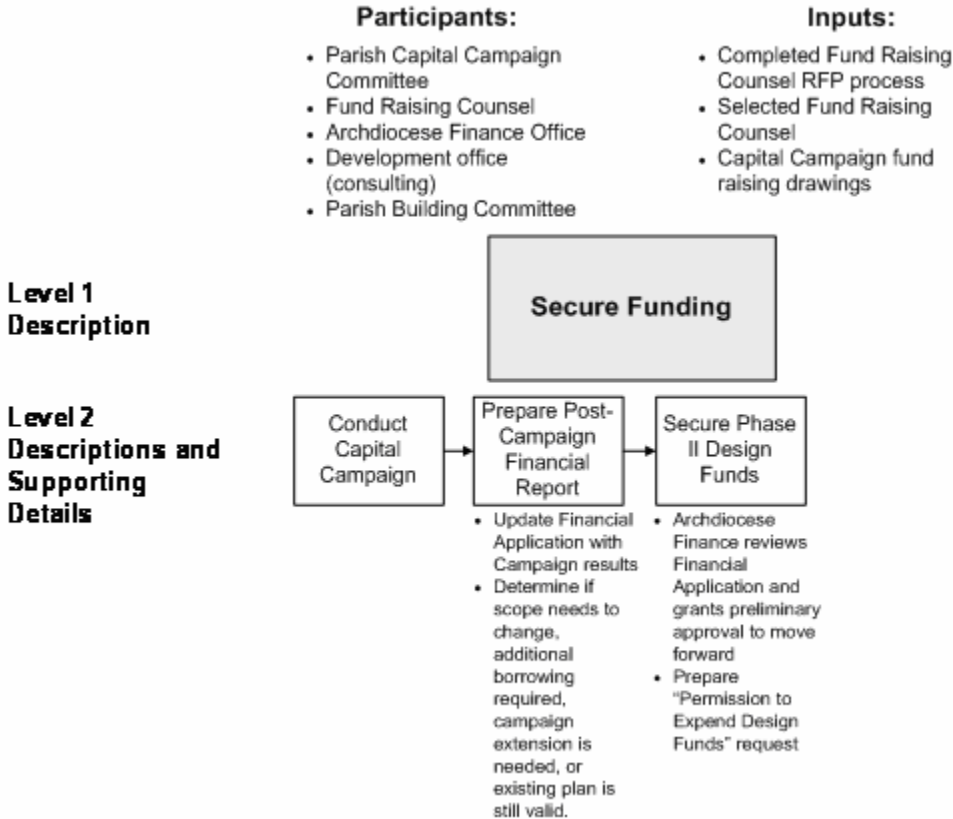
The following describes the process of formally selecting an architect and the preparation of initial drawings. This is the point where the construction project manager becomes a formal member of the team.



*Please note, AoA Development is now called AoA Stewardship.

1.4 LARGE CAPITAL PROCESS – SECURE FUNDING

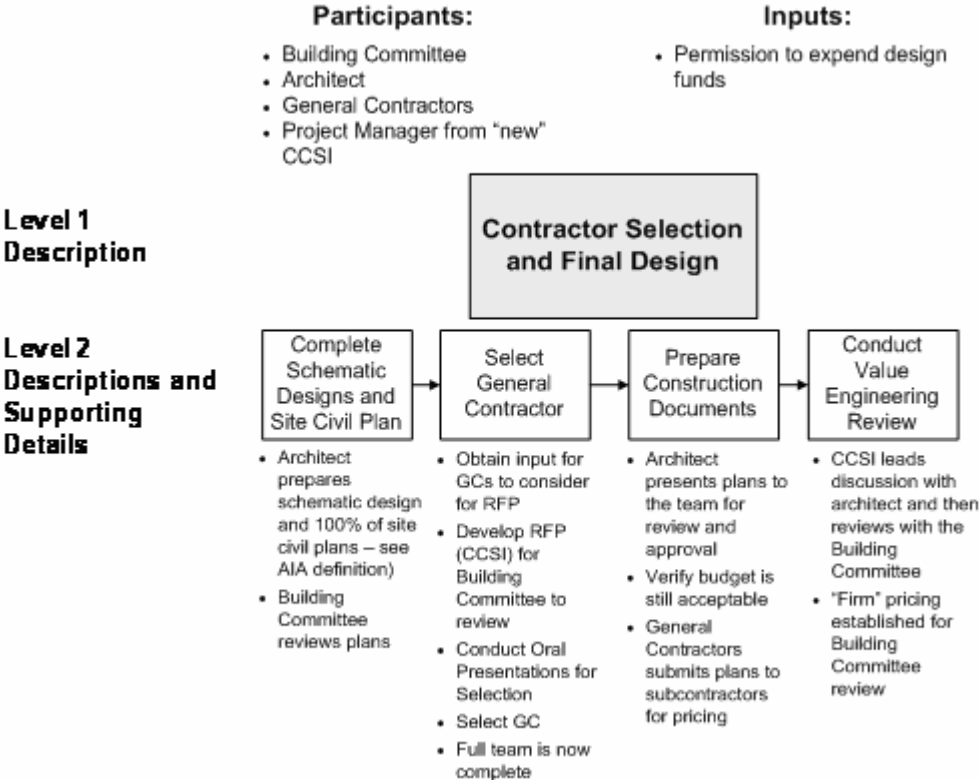
The following describes the processes associated with conducting the capital campaign to raise funds in support of the project.



*Please note, AoA Development is now called AoA Stewardship.

1.5 LARGE CAPITAL PROCESS – SELECT CONTRACTOR AND COMPLETE FINAL DESIGN

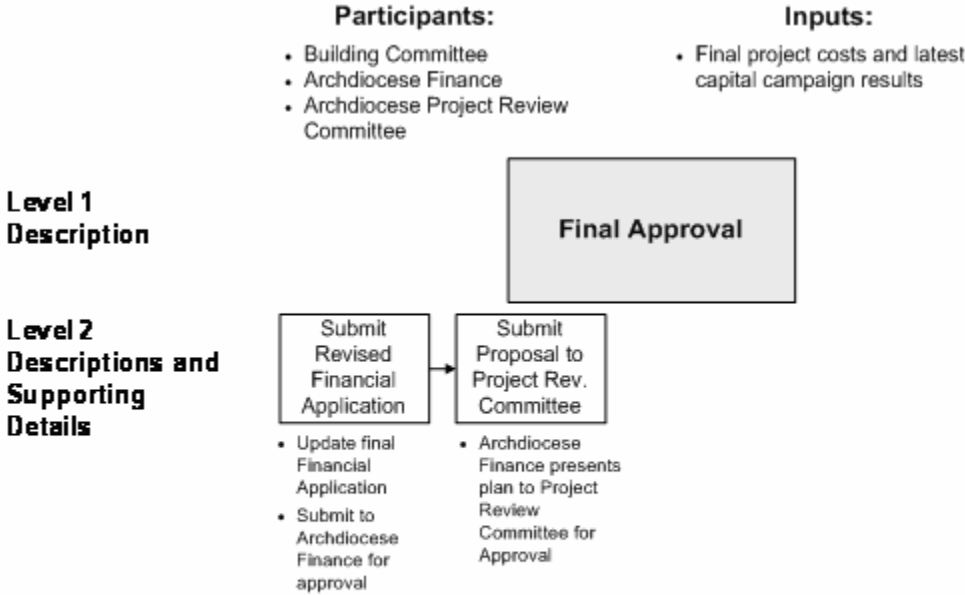
The following describes the processes associated with selecting the general contractor and completing the final design.



*Please note, AoA Development is now called AoA Stewardship.

1.6 LARGE CAPITAL PROCESS – OBTAIN FINAL PROJECT APPROVAL

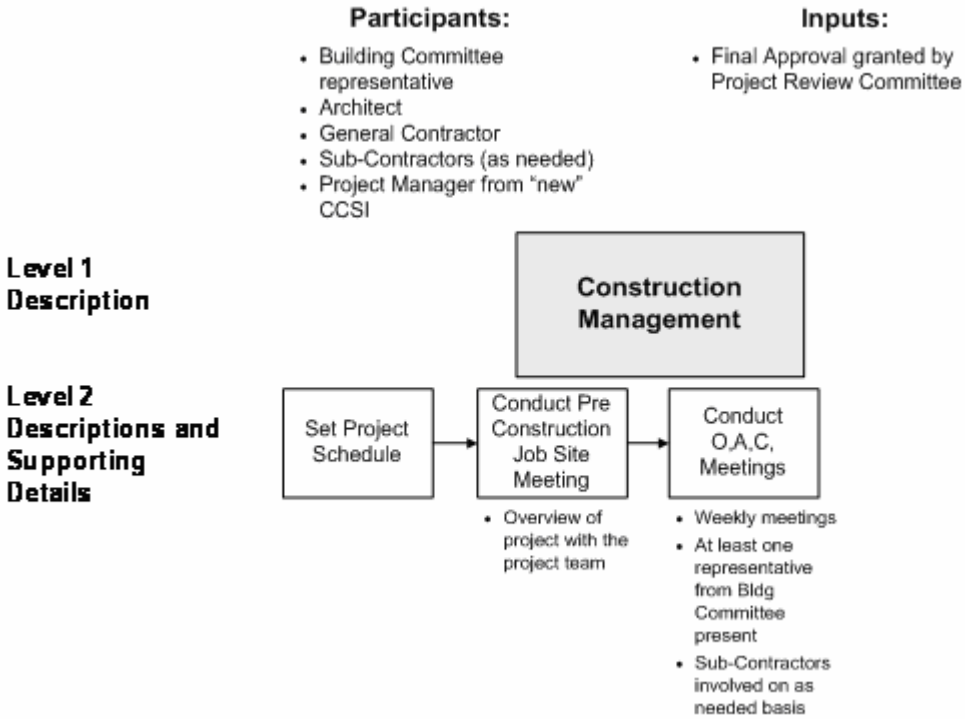
The following describes the processes associated with receiving final approval to proceed with the project.



*Please note, AoA Development is now called AoA Stewardship.

1.7 LARGE CAPITAL PROCESS – MANAGE THE PROJECT CONSTRUCTION

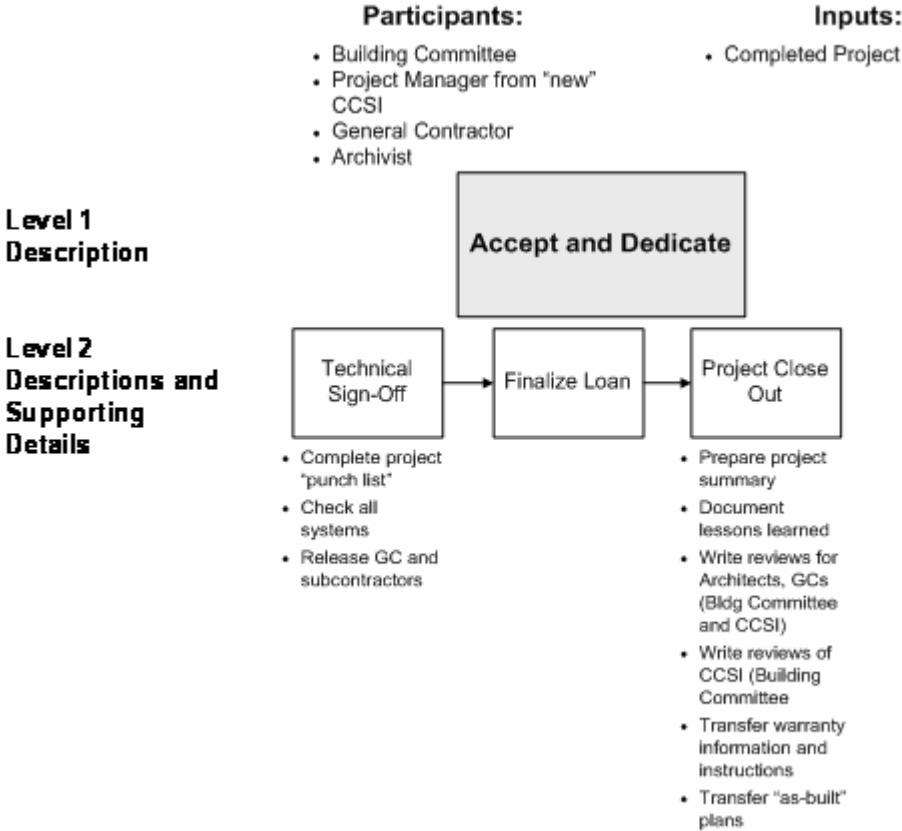
The following describes the process associated with the ongoing management of construction project.



*Please note, AoA Development is now called AoA Stewardship.

1.8 LARGE CAPITAL PROCESS – ACCEPTANCE AND DEDICATION

The following describes the project closeout process.



*Please note, AoA Development is now called AoA Stewardship.